

SUPERIORBILT®

TOOLS FOR TILE & STONE INSTALLATION

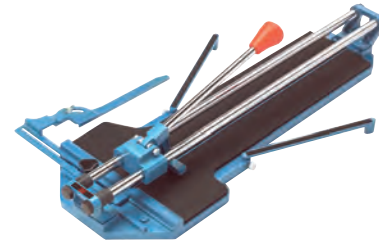


CUSTOM®



Cut & Mark Tools

Tile Cutters



4

Nippers • Hole Saws • Cutting Tools

5

Tape Measure • Tile Markers • Level

5

Prep Tools

Scrapers • Shavers • Blades



6

Screeds • Laths

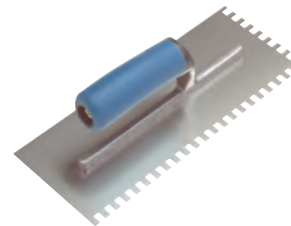
6

Shower Pan Products • Tape • Hammer Tacker

7

Set Tools

Hand Roller • Mixing Paddle • Backerboard Accessories



8

Knee Pads • Spacer Puller • Tile Spacers

9

Notch Trowels • Margin Trowels

10

Notch Series Guide

11

Grout & Finish Tools

Grout Floats



12

Sponges • Scrub Pads • Gloves

13

Sealer Applicators • Grout Bag • Grout Removal Tools

14

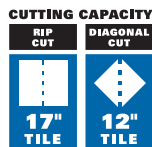
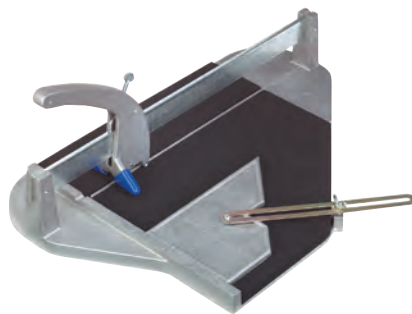
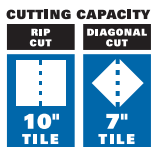
Index

15

LIMITED PRODUCT WARRANTY

Custom Building Products ("Custom") warrants to the original consumer purchaser that its product shall be free from defects in material and workmanship under normal and proper usage for a period of one year following the date of original purchase. Custom's sole liability under this warranty shall be limited to the replacement of the product. Some states do not allow the exclusion or limitation of incidental or consequential damages, so the above limitation or exclusion may not apply to you. This warranty will not extend to any product which has been modified in any way or which has not been used in accordance with Custom's printed instructions. Custom makes no other warranties either express or implied. This warranty gives you specific legal rights, and you may have other rights that vary from state to state.

GUARANTEED
QUALITY SATISFACTION



ITEM NO.
81-045JB

ITEM NO.
82-400

PROBITLSERIES™ SLIDE BAR TILE CUTTER

- Die-cast aluminum base
- Tile sleeves protect tile
- 1/2" carbide scoring wheel
- Interchangeable handle with springs

ITEM NO.	CUTTING CAPACITY		PKG.
	RIP	DIAGONAL	
82-10	10"	7" Tile	1

PROBITLSERIES™ SLIDE BAR TILE CUTTER

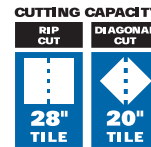
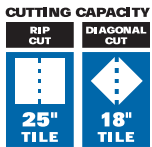
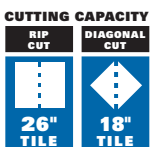
- Die-cast aluminum base
- Tile sleeves protect tile
- 1/2" carbide scoring wheel
- Interchangeable handle with springs

ITEM NO.	CUTTING CAPACITY		PKG.
	RIP	DIAGONAL	
82-17	17"	12" Tile	1

REPLACEMENT SCORING WHEELS

- Hardware included

ITEM NO.	DESCRIPTION	PKG.
81-045JB	7/8" Scoring Wheel with Bearings for Miki Tile Cutters	6
82-400	1/2" Carbide Scoring Wheel for ProBiltSeries Tile Cutters	6



MIKI® TWO-BAR TILE CUTTER

- 7/8" carbide scoring wheel
- Sealed bearings
- 25/32" (3/4") chrome, hardened steel bars

ITEM NO.	CUTTING CAPACITY		PKG.
	RIP	DIAGONAL	
81-600J	26"	18" Tile	1

MIKI® TWO-BAR TILE CUTTER

- 7/8" carbide scoring wheel
- Sealed bearings
- 25/32" (3/4") chrome, hardened steel bars
- Curved handle

ITEM NO.	CUTTING CAPACITY		PKG.
	RIP	DIAGONAL	
81-600JR	25"	18" Tile	1

MIKI® TWO-BAR TILE CUTTER

- 7/8" carbide scoring wheel
- Sealed bearings
- 25/32" (3/4") chrome, hardened steel bars
- Curved handle

ITEM NO.	CUTTING CAPACITY		PKG.
	RIP	DIAGONAL	
81-800JR	28"	20" Tile	1



WATER PUMP SPECIFICATIONS	
Volts	115
Amps	.6
Watts	30
H.P.	1/100
U.L.	Yes
CSA	Yes
Gallons per hour	210 @ 115V, 60 Hz

WATER PUMP

- 210 gallons/hour at 1' lift
- Low maintenance direct drive design
- Not oil-filled
- Environmentally safe

ITEM NO.	DESCRIPTION	PKG.
84-G150A	Water Pump	1



WATER HEATER

- Under extreme cold conditions, quickly warms tile saw water
- Heats 1 gallon of room temperature water to 90° in 10 minutes
- UL approved

ITEM NO.	DESCRIPTION	PKG.
80-3150	11-1/2" Water Heater	1



RUBBING STONE

- Smooth rough edges on freshly cut tile
- Use to dress diamond blades
- White stones will not mark tile

ITEM NO.	DESCRIPTION	PKG.
83-821A	8" x 2" x 1" Rubbing Stone	6



PROBILT SERIES™ TILE NIPPERS

- Carbide tipped
- Vinyl grips
- V-spring for smooth action

ITEM NO.	DESCRIPTION	PKG.
83-GT28	8" V-Spring, Finger Grip, Offset Jaws	6



PROBILT SERIES™ HOLE SAW

- Cutting material: diamond
- Best for cutting: ceramic tile, marble and underlayments

ITEM NO.	DESCRIPTION	PKG.
82-600	1-3/8" Diameter Hole Saw	4



HOLE SAW

- Cutting material: carbide grit
- Best for cutting: ceramic tile and underlayments

ITEM NO.	DESCRIPTION	PKG.
82-356	1-3/8" Diameter Hole Saw	6



TAPE MEASURE

- 25' SoftGrip™ tape measure
- Graduated in 1/16" markings

ITEM NO.	DESCRIPTION	PKG.
109-25G	25' Tape Measure	12



TILE MARKERS

- Easily mark on any slick surface — tile, glass or stone
- Marks will remain on tile when cutting with a wet saw; then easily wipe clean

ITEM NO.	DESCRIPTION	PKG.
39-60	Tile Markers Assorted Colors (6 Per Pkg.)	12



LEVEL

- Unbreakable, solid core acrylic vials
- Shock-resistant, plastic end caps
- Milled bottom finish
- Powder-coated finish, easy-to-clean
- Extruded aluminum

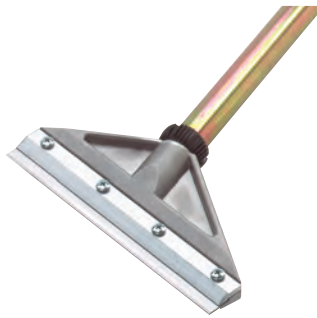
ITEM NO.	DESCRIPTION	PKG.
33-B48H	48" Level with Hand Holes	3



PROBILT SERIES™ 4" SUPER SCRAPER

- 3' to 6' extension handle
- Sharpened steel blade
- Die-cast aluminum head construction
- Head is welded to the handle, not crimped, making this scraper extremely durable

ITEM NO.	DESCRIPTION	PKG.
82-373	4" Super Scraper	6



PROBILT SERIES™ 8" SUPER SCRAPER

- 3' to 6' extension handle
- Sharpened steel blade
- Die-cast aluminum head construction
- Head is welded to the handle, not crimped, making this scraper extremely durable

ITEM NO.	DESCRIPTION	PKG.
82-375	8" Super Scraper	4

PROBILT SERIES™ SUPER SCRAPERS REPLACEMENT BLADES

ITEM NO.	DESCRIPTION	PKG.
82-376	8" Replacement Blades (3 per package)	12
82-377	8" Replacement Blades (10 per package)	12



4" WALL SHAVER

- 18" handle

ITEM NO.	DESCRIPTION	PKG.
82-100-18	4" Wall Shaver	12



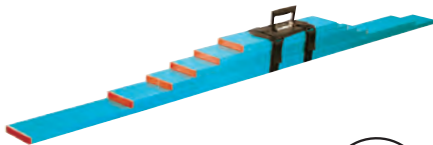
4" HEAVY-DUTY WALL SHAVER

- 18" Heavy-duty steel handle

ITEM NO.	DESCRIPTION	PKG.
82-370	4" Heavy-Duty Wall Shaver	12

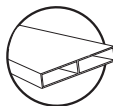
WALL SHAVER REPLACEMENT BLADES

ITEM NO.	DESCRIPTION	PKG.
82-155	4" Replacement Blades (10 per package)	12
82-150C	4" Replacement Blades (100 per package)	6

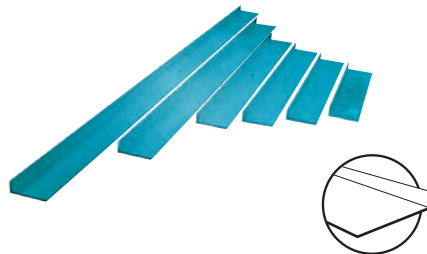


BOX SCREEDS

- Accurate straight edge for bathtubs, shower stalls and floors
- Lightweight 3/4" x 4" extruded box aluminum with reinforced center rib
- Wrap-around handle (included with set)



ITEM NO.	DESCRIPTION	PKG.
83-TS26	6 Piece Set: 18", 24", 30", 36", 54", 72"	1 Set
83-8	8 ft. Length	2
83-10	10 ft. Length	2
83-12	12 ft. Length	1



TILE SCREED SET

- Right-angle straight edge for bathtubs, shower stalls and floors
- Lightweight aluminum construction

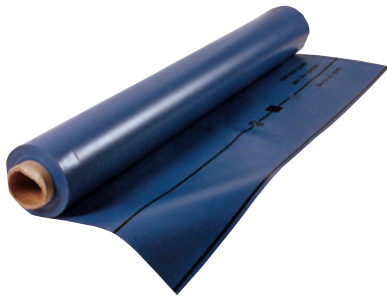
ITEM NO.	DESCRIPTION	PKG.
83-TS6	6 Piece Set: 18", 24", 30", 36", 54", 72"	1 Set



REDWOOD LATH FLOAT STRIPS

- Use as a guide to align mortar surfaces when floating counters, floors and walls
- 1-1/2" x 1/4" No. 1 grade float strips

ITEM NO.	DESCRIPTION	PKG.
81-LATH	8' Redwood Lath Float Strips (50 Per Box)	1



40 MIL VINYL SHOWER PAN LINER

- Protects a full mortar bed ceramic tile shower stall from leakage
- 40 mil waterproof, flexible sheet membrane
- Sold by the 50 linear foot roll

ITEM NO.	ROLL WIDTH	SQ. FT.	PKG.
80-60SF	5' Liner	250	1
80-72SF	6' Liner	300	1

VINYL SHOWER PAN SOLVENT CEMENT

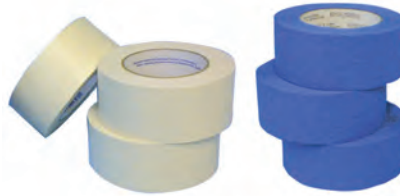
- Welds PVC liner for water tight seams

ITEM NO.	DESCRIPTION	PKG.
80-304	16 oz. Solvent Cement	12

SHOWER DRAIN FRAME

- Stainless steel stamped

ITEM NO.	DESCRIPTION	PKG.
80-4SS	4-1/4" Shower Frame	12



ITEM NO.
170-2050-2

ITEM NO.
170-460-2



ITEM NO.
168-HT50M



ITEM NO.
168-T50-1/2

WAX BOWL RING

- Anti-leak, no seep gasket
- Plastic flange and 3-1/2" x 1/4" brass bolts included

ITEM NO.	DESCRIPTION	PKG.
48-69	Wax Bowl Ring, Flange and Bolts	24

MASKING TAPE

- Blue tape leaves no residue

ITEM NO.	DESCRIPTION	PKG.
170-2050-2	2" Masking Tape	24
170-460-2	2" Blue Masking Tape	24

HAMMER TACKER

- Strikes like a hammer
- Staples with each blow

ITEM NO.	DESCRIPTION	PKG.
168-HT50M	ARROW [®] Hammer Tacker	4
168-T50-1/2	1/2" Staples (5,000 Per Box)	20



HAND ROLLER

- Ensures adhesive transfer
- Removes air pockets
- Handle extends from 18" to 32"
- No scuff — non-marking rollers

ITEM NO.	DESCRIPTION	PKG.
80-R32	Roller	2



CHEATER BEATER BOX MIXING PADDLE

- For mixing thin-set or medium-bed mortar
- Hexagonal, non-slip shaft
- Injects little or no air on a dry or wet mix
- Use with 1/2" drill motor

ITEM NO.	DESCRIPTION	PKG.
72A-85	Cheater Beater Box Mixing Paddle	6



POLYETHYLENE MIXING BOX

- For mixing large amounts of cement or mortar
- Specially designed with rounded bottom for mixing ease
- Lightweight plastic
- Strong, durable and easy-to-clean

ITEM NO.	DESCRIPTION	PKG.
108-P40	62" x 40" Mixing Box — 11.75 Cu. Ft.	1



PLASTIC BUCKET

- Ideal for mixing mortar, thin-set or grout
- 5 gallon capacity

ITEM NO.	DESCRIPTION	PKG.
52-60	5 Gallon Bucket	1



BACKERBOARD SCREWS

- Fastens WonderBoard® and other backerboard underlayments
- 1-1/4" screws

ITEM NO.	DESCRIPTION	PKG.
75-1251	1-1/4" Screws (200 Pieces)	14



FIBERGLASS BOARD TAPE

- Alkali resistant
- For covering holes, cracks and joints in backerboard
- Mesh construction

ITEM NO.	DESCRIPTION	PKG.
163-F50	2" x 50' Board Tape	24
FGT100C	2" x 100' Board Tape	24
163-F300	2" x 300' Board Tape	6



PLATINUM[®] KNEE PADS

- Ultimate in comfort and durability
- No bind straps and dense foam pads
- Quick snap release
- Shin support at lower wedge, relieves pressure at knees and toes
- Designed left and right to match knee caps

ITEM NO.	DESCRIPTION	PKG.
P1KP1	Platinum Knee Pads	4

PROBILT SERIES™ KNEE PADS

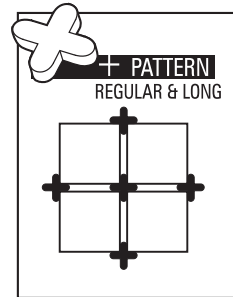
- Maximum comfort and protection
- Molded rubber liner – lasts 50% longer
- Non-skid outer shell for maximum grip
- Flexible accordion design
- Improved rubber straps adjust quickly for a perfect fit

ITEM NO.	DESCRIPTION	PKG.
19-KN1	Knee Pads	6

TILE SPACER PULLER

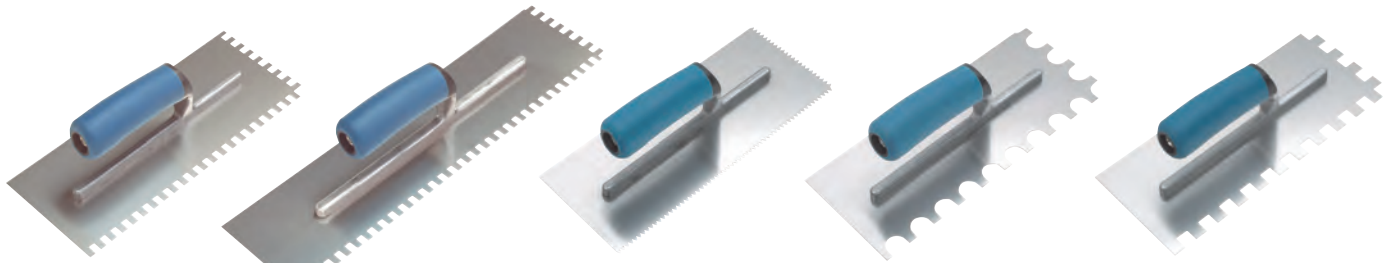
- For spacer removal
- Non-scuff rubber bumper acts as a fulcrum and protects edges of tile
- SoftGrip™ handle

ITEM NO.	DESCRIPTION	PKG.
85-251	Spacer Puller	6



PROBILT SERIES™ TILE SPACERS

DESCRIPTION	SIZE	BAGS	QTY.	PKG.	BOXES	QTY.	PKG.	TUBS	QTY.	PKG.
+ Spacers	1/16" Spacers	81-P116B	300	36 Bags/Case	81-P116B-B	3000	6 Bags/Case	—	—	—
	1/8" Spacers	81-P18B	200	36 Bags/Case	81-P18B-B	1600	6 Bags/Case	—	—	—
	3/16" Spacers	81-P316B	150	36 Bags/Case	81-P316B-B	850	6 Bags/Case	—	—	—
	1/4" Spacers	81-P14B	100	36 Bags/Case	81-P14B-B	550	6 Bags/Case	—	—	—
	3/8" Spacers	81-P38B	50	36 Bags/Case	—	—	—	—	—	—
	1/2" Spacers	81-P12B	35	24 Bags/Case	—	—	—	—	—	—
Long + Spacers	1/8" Spacers	—	—	—	81-P18BL-B	1000	6 Bags/Case	—	—	—
	3/16" Spacers	—	—	—	81-P316BL-B	650	6 Bags/Case	—	—	—
	1/4" Spacers	—	—	—	81-P14BL-B	450	6 Bags/Case	—	—	—
Wedges	Small	81-W	200	36 Bags/Case	—	—	—	81-W-B	500	6 Bags/Case
	Large	—	—	—	—	—	—	81-WL-B	150	6 Bags/Case



ITEM NO.
85-51

ITEM NO.
85-51X

ITEM NO.
85-44G

ITEM NO.
85-56G

ITEM NO.
85-99G

PROBILT SERIES™ NOTCH TROWELS FOR TILE, MARBLE AND STONE

- Stainless steel blade for rust free durability
- Comfortable SoftGrip™ handle

NOTCH SERIES	ITEM NO.	NOTCH SIZE	USE	PKG.
44 Series	85-44G	3/16" x 5/32" V	Adhesives; Wall Tile 6" or Smaller	6
51 Series	85-51G	1/4" x 3/8" x 1/4" SQ	Thin-Set; Tile 8" to 16"	6
51 Series (16")	85-51X	1/4" x 3/8" x 1/4" SQ	Thin-Set; Tile 8" to 16"	6
52 Series	85-52G	1/4" x 3/8" x 1/4" U	Thin-Set; Tile 8" to 12"	6
53 Series	85-53G	1/4" x 1/2" x 1/4" U	Thin-Set; Tile 12" or Larger	6
55 Series	85-55G	5/16" x 1/4" x 1/16" V	Adhesives; Wall Tile 8" to 16"	6
56 Series	85-56G	3/4" x 9/16" x 3/8" U	Medium Bed Mortar or Marble, Granite & Travertine Premium Medium Bed Mortar; Marble or Granite	6
77 Series	85-77G	3/16" x 1/4" V	Adhesives; Wall Tile 6" to 12"	6
87 Series	85-87G	1/4" x 5/16" x 1/4" U	Thin-Set; Tile 8" or Smaller	6
88 Series	85-88G	1/4" x 1/4" x 1/4" SQ	Thin-Set; Tile 8" or Smaller	6
99 Series	85-99G	1/2" x 1/2" x 1/2" SQ	Thin-Set or Medium Bed Mortar; Pavers or Tile Larger than 16"	6
99 Series (16")	85-99X	1/2" x 1/2" x 1/2" SQ	Thin-Set or Medium Bed Mortar; Pavers or Tile Larger than 16"	6



ITEM NO.
35-522G

ITEM NO.
35-562G

ITEM NO.
35-582G

PROBILT SERIES™ MARGIN TROWELS

- Forged – high carbon spring steel
- SoftGrip™ handle

ITEM NO.	DESCRIPTION	PKG.
35-522G	5" x 2" Margin Trowel	6
35-562G	6" x 2" Margin Trowel	6
35-582G	8" x 2" Margin Trowel	6

MARGIN NOTCH TROWELS

- For patch jobs, hard-to-reach areas, and spreading thin-set mortar on v-cap or bullnose tile
- 1/4" x 1/4" x 1/4" SQ

ITEM NO.	DESCRIPTION	PKG.
85-240-88	2" x 6" Margin Notch Trowel	12



Notch Series Guide

Measurement Format: Notch width x notch depth x space apart. All measurements in inches.
Always refer to manufacturer's instructions for notch recommendations.

All notch profiles shown are 100% of actual size.

44 Series

3/16 x 5/32 V
Adhesives;
Wall tile 6" or smaller

77 Series

3/16 x 1/4 V
Adhesives;
Wall tile 6" to 12"

55 Series

5/16 x 1/4 x 1/16 V
Adhesives;
Wall tile 8" to 16"

87 Series
NTCA RECOMMENDED

1/4 x 5/16 x 1/4 U
Thin-Set;
Tile 8" or smaller

52 Series
NTCA RECOMMENDED

1/4 x 3/8 x 1/4 U
Thin-Set;
Tile 8" to 12"

53 Series
NTCA RECOMMENDED

1/4 x 1/2 x 1/4 U
Thin-Set;
Tile 12" or larger

56 Series
NTCA RECOMMENDED

3/4 x 9/16 x 3/8 U
Medium Bed or Marble & Granite Mortars; Marble, Granite or Natural Stone

88 Series

1/4 x 1/4 x 1/4 SQ
Thin-Set;
Tile 8" or smaller

51 Series

1/4 x 3/8 x 1/4 SQ
Thin-Set;
Tile 8" to 16"

99 Series

1/2 x 1/2 x 1/2 SQ
Thin-Set or Medium Bed Mortar;
Tile 16" or larger, Pavers and Natural Stone



ITEM NO.
151-43P



ITEM NO.
151-44P



ITEM NO.
151-45P

PLATINUM® GROUT FLOAT

- Solid polypropylene float will not separate
- Offset handle for hard-to-reach areas
- Ergonomic handle fits either or both hands
- Soft, sharp edge for fast, easy clean-up

ITEM NO.	DESCRIPTION	PKG.
P1GF1	Platinum Grout Float	4

GUM RUBBER GROUT FLOATS

- Plastic handle and plastic back
- Tapered edges

ITEM NO.	DESCRIPTION	USE	PKG.
151-43P	4" x 9" Grout Float	Floors, Walls and Countertops; Sanded and Non-Sanded Grout	12
151-44P	4" x 12" Large Grout Float	Floors, Walls and Countertops; Sanded and Non-Sanded Grout	12
151-45P	12" Offset Tapered Grout Float	Hard-to-Reach, Low-Height Areas — Under Toe Kicks of Kitchen and Bathroom Counters; Sanded and Non-Sanded Grout	12



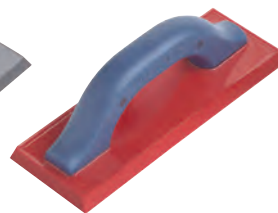
ITEM NO.
151-53P



ITEM NO.
151-55P



ITEM NO.
151-25P



ITEM NO.
151-54P



ITEM NO.
151-44G

PROBILT SERIES™ POLYPROXYLENE™ GROUT FLOATS WITH SOFTGRIP™ HANDLE

- Polypropylene™ body will not mar or scratch tile; holds edge longer
- Comfortable SoftGrip™ handle

ITEM NO.	DESCRIPTION	CONSTRUCTION	USE	PKG.
151-53P	3-1/2" x 9-1/2" Grout Float	Grey Polypropylene Body, SoftGrip Handle	Floors, Walls and Countertops; Sanded and Non-Sanded Grout	12
151-55P	3" x 12" Offset Grout Float	Grey Polypropylene Body, SoftGrip Handle	Hard-To-Reach, Low-Height Areas — Under Toe Kicks of Kitchen and Bathroom Counters; Sanded and Non-Sanded Grout	12
151-25P	2" x 5-1/2" Margin Grout Float	Grey Polypropylene Body, SoftGrip Handle	Floors, Walls and Countertops; Sanded and Non-Sanded Grout	12
151-54P	3-1/2" x 9-1/2" Stone Grout Float	Red Polypropylene Body, SoftGrip Handle	Softer for Textured Tiles and Natural Stone; Sanded and Non-Sanded Grout	12
151-44G	4" x 10-1/2" Epoxy Grout Float	Green Polypropylene Body, SoftGrip Handle	Floors, Walls and Countertops; Epoxy Grouts	12



HYDROPHILIC GROUT SPONGES

- For grouting and cleaning
- Features a smooth, less porous surface that will not load with sand, cement or grout
- Exceptional absorption, easy to rinse, long-lasting

ITEM NO.	DESCRIPTION	PKG.
48-2XL	7-1/2" x 5-1/4" x 2-1/2" Sponge	400 Per Bale
48-2XL-D	7-1/2" x 5-1/4" x 2-1/2" Sponge	250 Per Bale

SCRUB PADS

- Designed to clean epoxy grout residue from tile and great for cleaning porcelain and tile in pools, showers, baths, etc.
- 4-5/8" x 10" x 3/4" Pads
- Blue pads are coarse for maximum scrubbing power
- White pads are less coarse and work great for epoxy applications

ITEM NO.	DESCRIPTION	PKG.
85-10B	Blue Pad Only	12
85-10W	White Pad Only	12

GROUT CLEAN-UP & SEALER TOWELS

- For grout and sealer application
- Excellent for use with CEG-Lite™ Epoxy Grout
- Reduces surface haze

ITEM NO.	DESCRIPTION	PKG.
GTCT6	18" x 18" Microfiber Towel	6



CHEESE CLOTH

- Polish any tile surface to a bright finish
- Made of unbleached cotton

ITEM NO.	DESCRIPTION	PKG.
48-33	Cheese cloth – 5 Yards	12

PROBILT SERIES™ HEAVY-DUTY GROUT GLOVES

- For tile setting and other industrial or household applications
- Rolled cuff, extra long gauntlet, and flocked liner to keep hands dry
- Resistant to most caustic chemicals, paints and sealers

ITEM NO.	DESCRIPTION	PKG.
58-80L	Large Grout Gloves	12
58-80XL	X-Large Grout Gloves	12

COUNTER DUSTER

- Flagged-tip bristles pick up the smallest particles

ITEM NO.	DESCRIPTION	PKG.
123-6458	Counter Duster	12



GROUT SEALER ROLLER BOTTLE

- Easily applies sealer or colorant to grout
- Foam wheels
- Two sizes for different size grout joints

ITEM NO.	DESCRIPTION	PKG.
85-8500	Grout Sealer Roller Bottle	12

GROUT SEALER APPLICATOR

- Easily applies sealer or colorant to grout
- Brush makes applying neat and easy

ITEM NO.	DESCRIPTION	PKG.
85-061	Grout Sealer Applicator	12

DELUXE GROUT BAG WITH TIP

- Ideal for grouting tile or masonry
- The original white grout bag with built-in, molded Duralon tip for smooth flow of grout
- Reusable many times over

ITEM NO.	DESCRIPTION	PKG.
42A-55C	Grout Bag	24



SKELETON CAULKING GUN

- For the extrusion of stiff caulks and sealants
- 1/10 gallon
- Dripless

ITEM NO.	DESCRIPTION	PKG.
140-111	Caulking Gun	6



PROBILT SERIES™ GROUT ROUT

- For removal of grout or excess thin-set mortar before grouting
- For joints from 1/8" to 1/2"
- SoftGrip™ handle

ITEM NO.	DESCRIPTION	PKG.
84-84	Triangle Bit Rout	6



CARBIDE GROUT SAW

- Removes old grout
- Stackable, replaceable carbide-coated blades
- Comfort-grip molded PVC SoftGrip™ handle

ITEM NO.	DESCRIPTION	PKG.
84-G58	Grout Saw	12
84-G58B	Replacement Blades	12



INDEX

A-C		Grout Sponges	13	Scoring Wheels	4
ARROW® Hammer Tacker*	7	Hand Roller	8	Scraper Blades	6
Backerboard Accessories	8	Heater	5	Scrapers	6
Board Tape	8	Hole Saws	5	Screeds	6
Brushes		Hydrophilic Grout Sponges	13	Screws, Backerboard	8
Counter Duster	13	K-N		Scrub Pads	13
Bucket	8	Knee Pads		Shavers	6
Carbide Scoring Wheels	4	Platinum	9	Shavers Blades	6
Caulking Gun	14	SuperiorBilt	9	Shower Drain Frame	7
Cheater Beater Box Mixing Paddle	8	Levels	5	Shower Pan Liner	7
Cheesecloth	13	Margin Trowels	10	Slide Bar Cutters	4
Cutters		Margin Notch Trowels	10	Solvent Cement	7
Slide Bar	4	Markers, Tile	5	Spacer Puller	9
Two-Bar	4	Masking Tape	7	Spacers, Tile	9
Cutter Wheels, Carbide	4	Measuring Tape	5	Sponges	13
D-F		MIKI® Tile Cutter*	4	Stapler & Staples	7
Diamond Hole Saws	5	Mixing Box	8	T-W	
Duster	13	Mixing Paddle	8	Tape, Joint	8
Fiberglass Board Tape	8	Nippers	5	Tape, Masking	7
Floats, Grout		Notch Guide	11	Tape Measure	5
Platinum	12	Notch Trowels	10	Tile Markers	5
SuperiorBilt	12	P-S		Tile Cutters	4
Float Strips, Redwood Lath	6	Pan Liner/Solvent Cement	7	Tile Nippers	5
Floor Scraper Blades	6	Plastic Bucket	8	Tile Spacers	9
Floor Scrapers	6	Platinum Tools	9, 12	Tile Spacer Puller	9
G-H		Polyethylene Mixing Box	8	Towels, Microfiber	13
Gloves	13	Pump, Water	5	Trowels	
Grout Clean-Up & Sealer Towels	13	Redwood Lath Float Strips	6	Margin	10
Grout Bag	14	Replacement Blades		Notch	10
Grout Floats		Scrapers	6	Notch Margin	10
Platinum	12	Shavers	6	Two-Bar Tile Cutters	4
SuperiorBilt	12	Roller, Hand	8	Wall Shavers	6
Grout Removing Tools	14	Rubbing Stone	5	Water Heater	5
Grout Rout	14	Saws		Water Pump	5
Grout Saw	14	Grout Saw	14	Wax Bowl Ring	7
Grout Sealer Applicators	14	Hole Saws	5		

* MIKI® is a registered trademark of ISHII CHOKOKOGU MFG. CO., LTD., Miki-City, Hyogo-Pref., Japan
 ARROW® is a registered trademark of Arrow Fastener Company, LLC, Saddle Brook, NJ

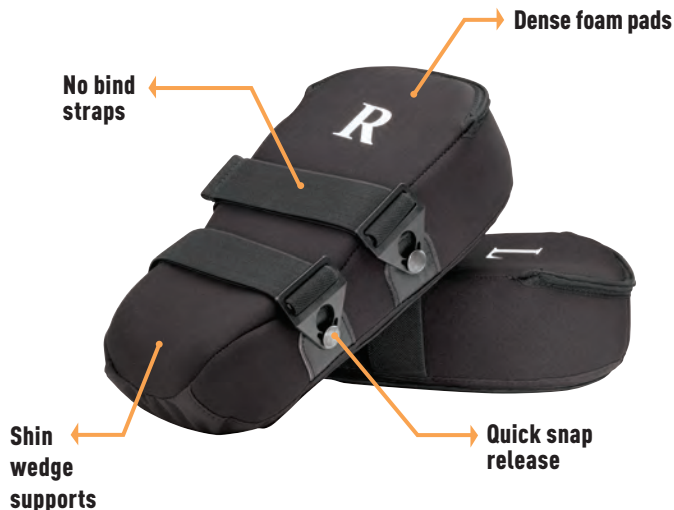
PLATINUM[®]

BY SUPERIORBILT[®]

KNEE PADS

Unique Benefits

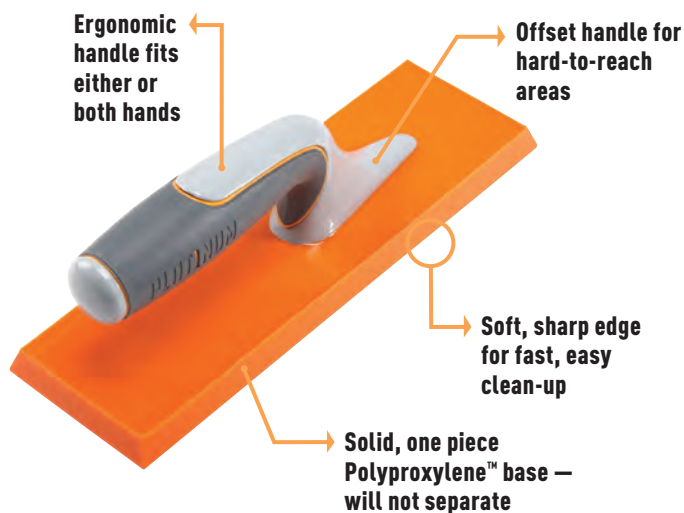
Unlike ordinary knee pads, ours are designed for comfort, offering a custom fit with designated left and right to match your knee caps. Your shin is supported with a lower wedge that takes pressure off both your knees and toes allowing extended working time with minimal discomfort. Made of dense foam, these knee pads offer the ultimate in comfort and durability. Extra wide straps will not bind behind your legs.



GROUT FLOAT

Unique Benefits

Unlike ordinary grout floats, our solid Polypropylene™ float is built to last, it does not have layers of material to peel apart. The combination of a soft material and a sharp edge leaves less grout behind, making clean-up faster and easier. Instead of a traditional D-shaped handle, our specially designed handle gives comfort in either hand and it's long enough to fit both hands. Offset handle means no reason for a second float to grout hard-to-reach areas. And now you can hang it on your bucket.



CUSTOM[®]

Custom Building Products is recognized as the leader in performance-driven installation systems & support.

Custom Building Products
Seal Beach, CA 90740
800-272-8786

Tool Technical Services
800-423-1802
custombuildingproducts.com

Nationwide manufacturing facilities. Printed in the U.S.A. STCTC 2/12R BH